



RSE at Pontlliw Primary School

What is RSE (Relationships & Sexuality Education) and why is it taught?

Our priority in Pontlliw is that our pupils are happy, safe and healthy. Our pupils should have the right to access information that keeps them **safe from harm**. This includes learning about healthy relationships, keeping safe online and offline, and being confident to raise issues with responsible adults. Parents have a central role to play in supporting their children, however there is also a crucial role for schools – especially in a world where there is so much inaccurate, misleading information and harmful materials circulating online. RSE is designed to **safeguard** all our children, supporting them to develop knowledge, skills and behaviours that will assist in protecting them throughout their lives.



What is the RSE code?

The RSE Code provides detail for schools and settings on what must be taught and when.

The RSE code can be found here:

[RSE code](#)



RSE at Pontlliw Primary School

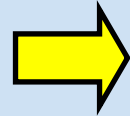
The RSE code sets out each strand of teaching and learning in three broad development phases:

Phase 1 (from age 3)

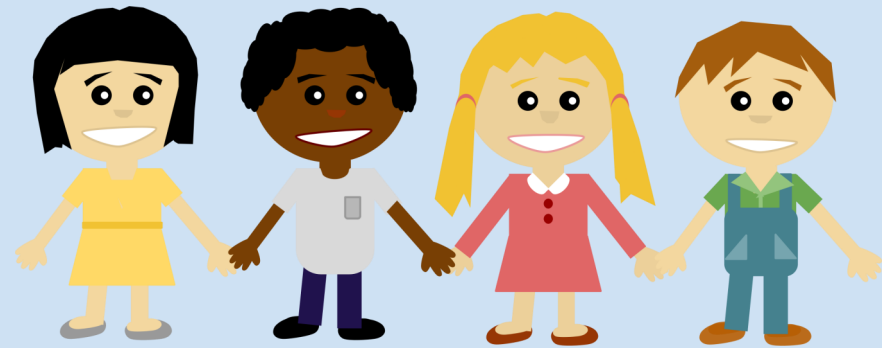
Phase 2 (from age 7)

Phase 3 (from age 11)

These phases allow our school to design a curriculum, which is tailored to the age and needs of our learners here in Pontlliw.



Great care has been taken to ensure that all learning within RSE is **developmentally appropriate**. Topics like online safety, consent/permission and healthy relationships are all included in the Code, but at developmentally appropriate phases so learners aren't exposed to things that aren't suitable to their age and development. At a younger age, for example, they will be taught about relationships with parents, family and friends and treating each other with kindness and empathy.



For more information, please see our school website.